

Impacts on ports and maritime transport in the Mediterranean region

Olaf Merk

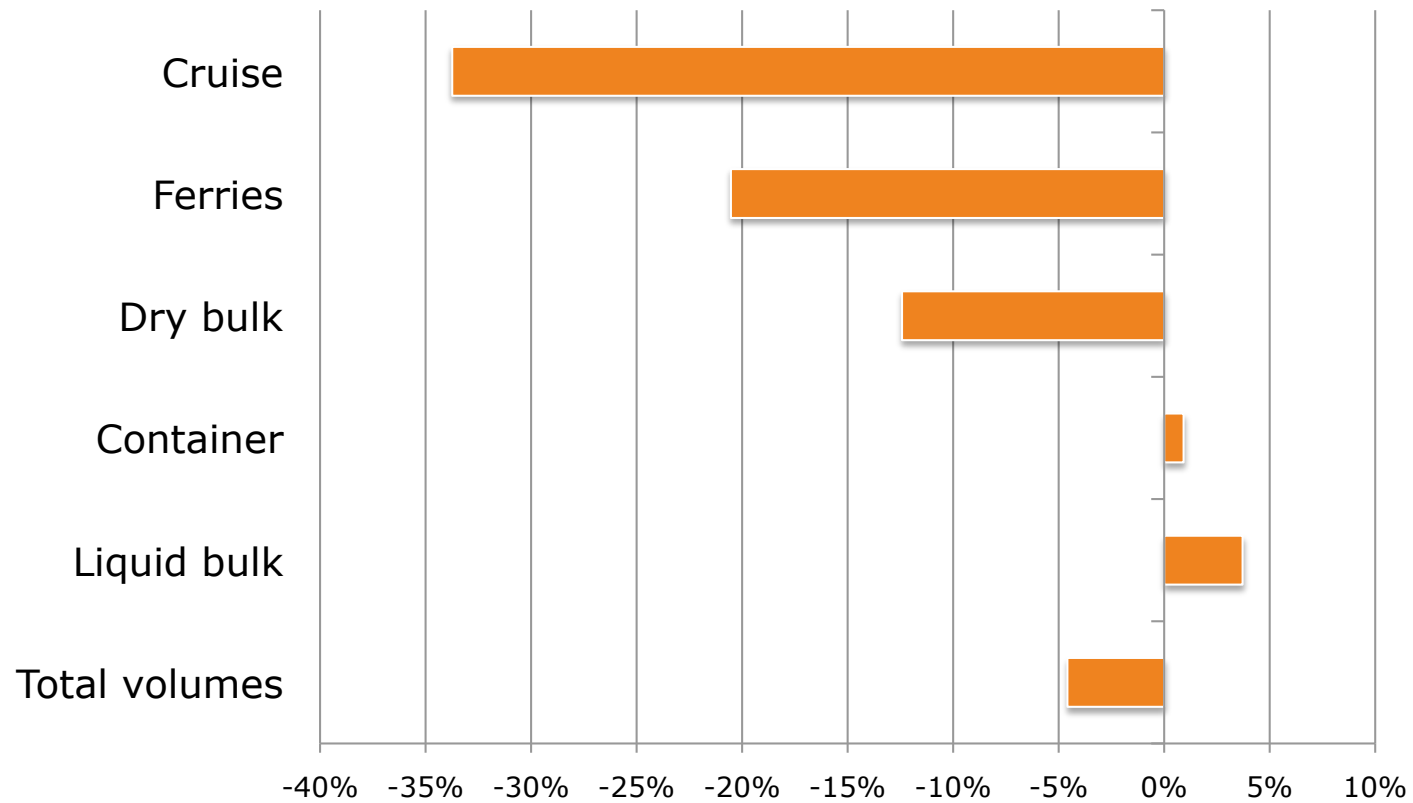
Webinar “Impacts of the COVID-19 pandemic on Ports and Maritime Transport in the Mediterranean Region”

Union for the Mediterranean, MEDports Association

27 May 2020

Port volumes in the Mediterranean region

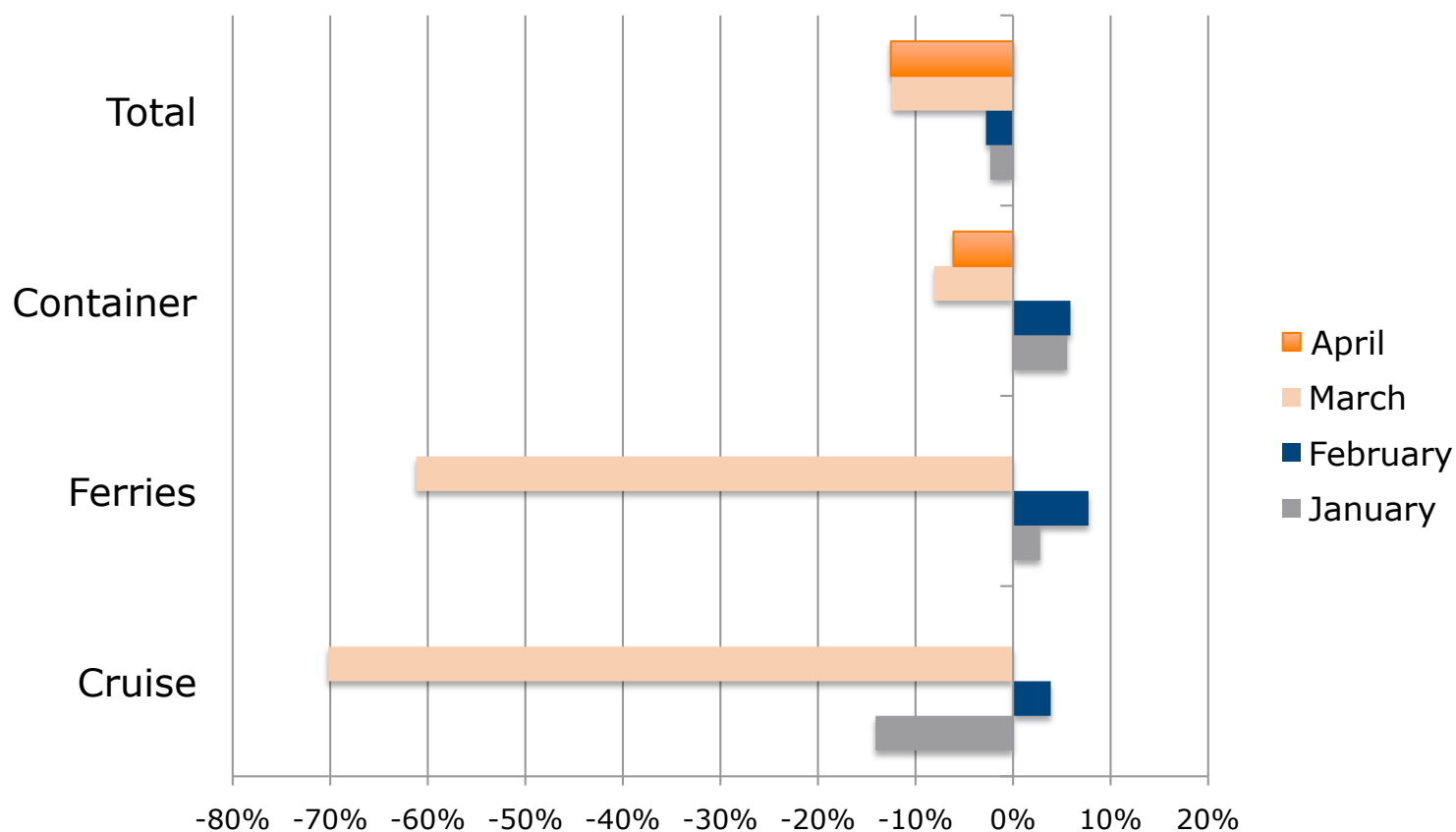
Growth rates in first quarter 2020 (year-on-year)



Source: International Transport Forum, ports, terminal operators

Mediterranean port traffic volumes per month

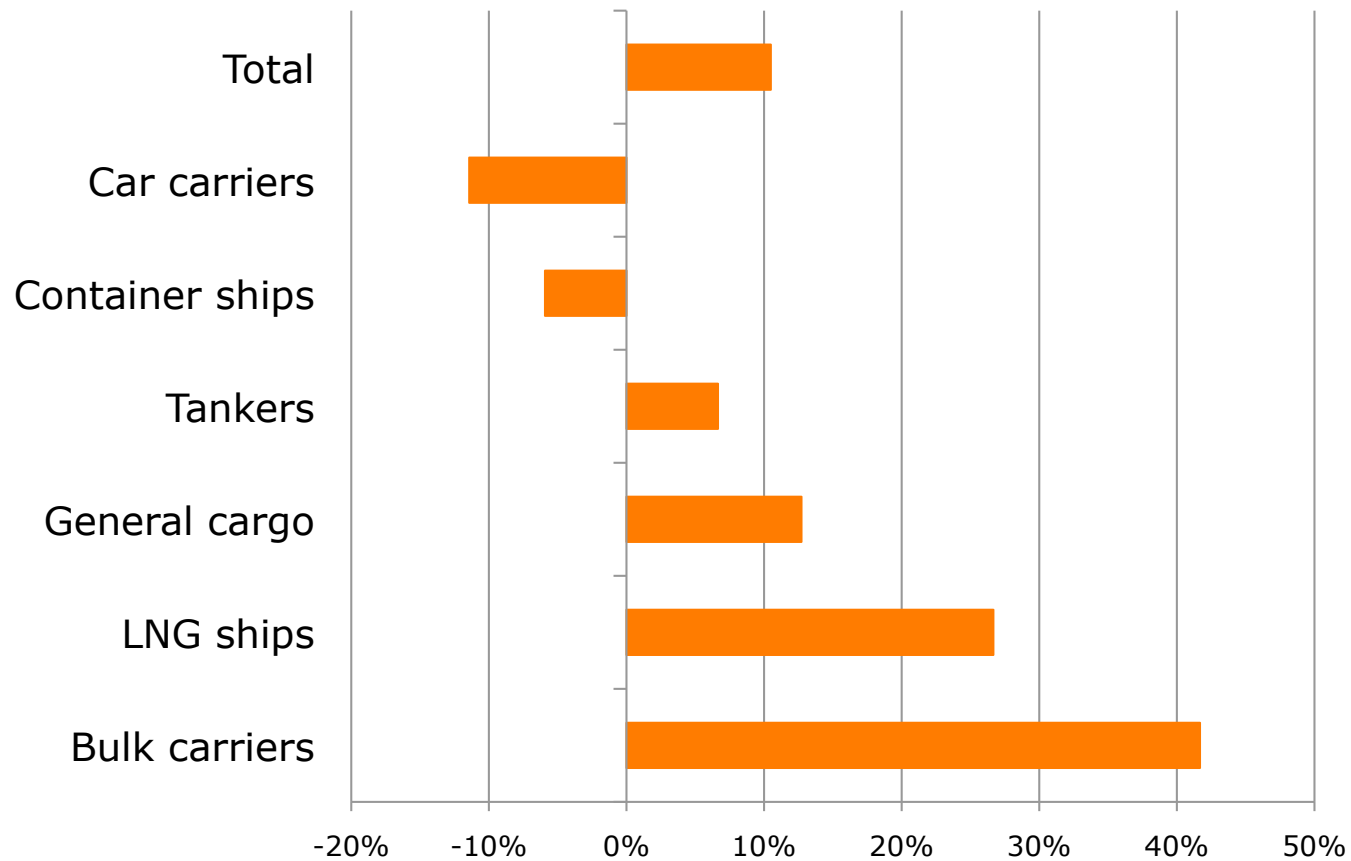
Growth rates in first four months 2020 (year-on-year)



Source: International Transport Forum, ports, terminal operators

Suez Canal crossings in 2020

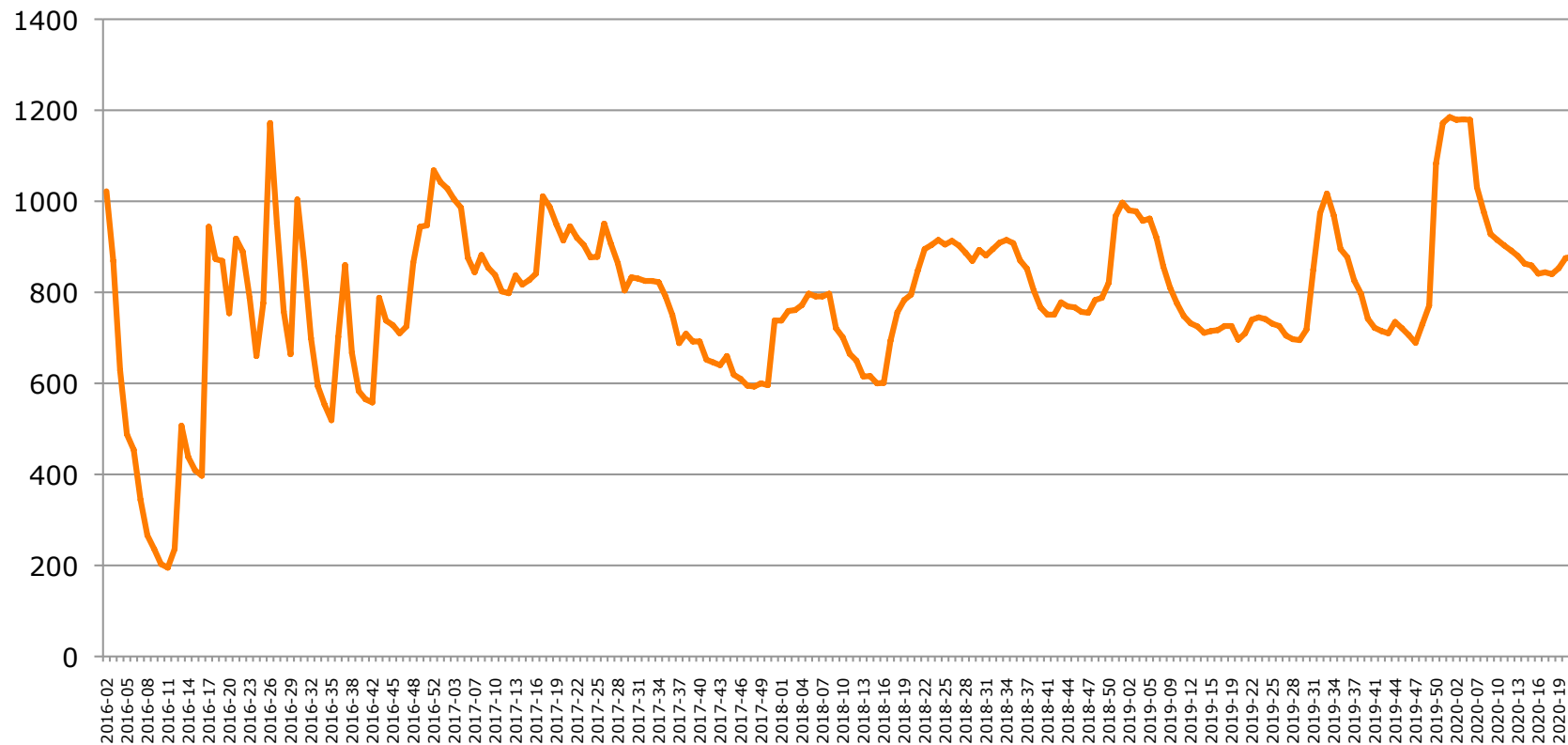
Growth rates in number of ships first two months 2020 (year-on-year)



Source: International Transport Forum, Suez Canal Authority

Container shipping costs

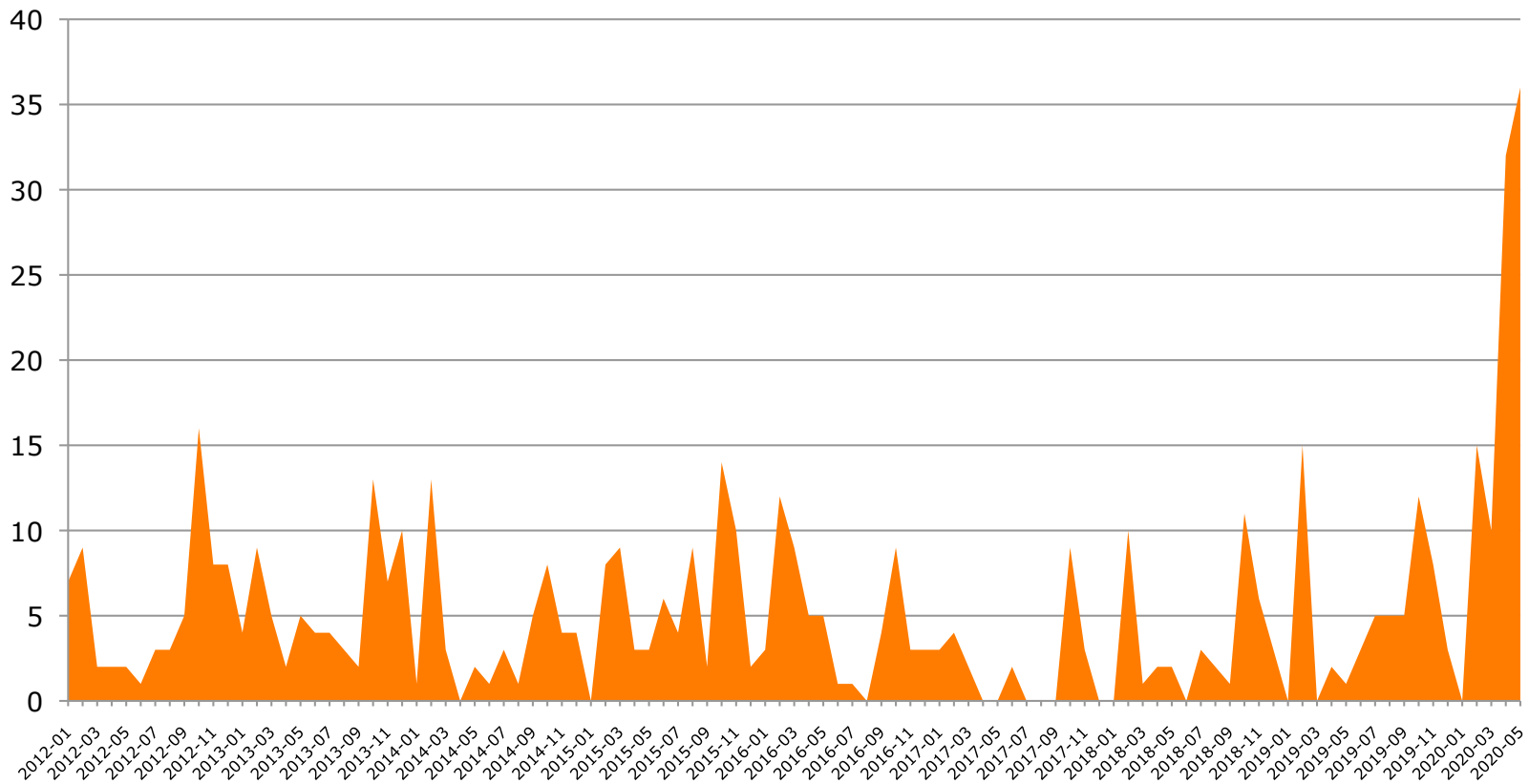
Asia-Med container freight rate (SCFI), USD per TEU



Source: International Transport Forum, Shanghai Shipping Exchange

Container port connectivity in the Mediterranean

Number of blank sailings on Asia-Med trades



Source: International Transport Forum, Sea Intelligence

“Never let a good crisis go to waste”

Three challenges to tackle:

1. Moral hazard related to bailouts
2. Offloading of risks and costs to the public sector
3. A subsidy “race to the bottom”, enabled by “port competition”



Annex: ports included in figures of slide 2 & 3

- Barcelona
 - Valencia
 - Algeciras
 - Tarragona
 - Castellon
 - Cartagena
 - Malaga
 - Palma de Mallorca
 - Ibiza
 - La Savina
 - Marseille-Fos
 - Bastia
 - Genoa/Savona
 - La Spezia
 - Naples/Salerno
 - Augusta/Catania
 - Taranto
 - Bari/Brindisi
 - Ravenna
 - Venice
 - Trieste
 - Dubrovnik
 - Piraeus
 - Kumport
 - Alexandria
 - Port Said East
 - Tanger
 - Nador
-

Thank you!

Olaf Merk

olaf.merk@itf-oecd.org

Twitter: [@o_merk](https://twitter.com/o_merk)